



ASSOCIATION DES USAGERS DU
RESEAU D'EAU POTABLE



Réseau N°11 - ASUREP Butshimunyi

Commune de Kanshi, Ville de MbujiMayi, Province du Kasai
Oriental, RD Congo

RAPPORT TRIMESTRIEL D'ACTIVITES de l'ASUREP

Butshimunyi

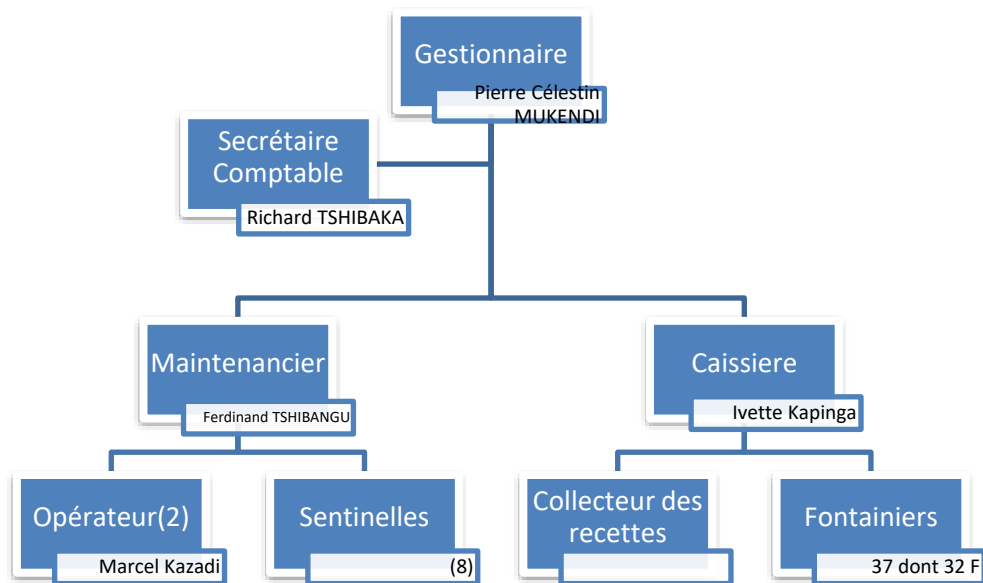
Période : DE JANVIER à MARS 2023

Adresse du Réseau : 41, Avenue NYANGUILA Quartier BIMPA Commune de Kanshi

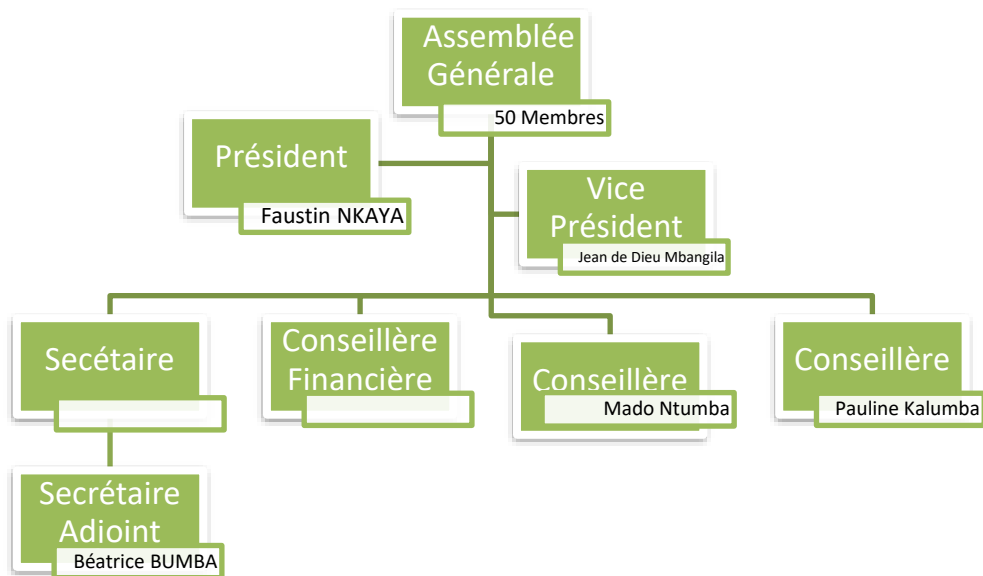
Rédigé par : PIERRE CELESTIN MUKENDI MUTOMBO

1. Organigramme de l'ASUREP

1.1. Unité de Gestion



1.2. Conseil d'Administration (rapporte à l'Assemblée Générale)



2. Compte Rendu Technique

2.1. Informations générales sur le réseau

Population estimée : 37995 personnes

Longueur de conduites cumulée estimée : 13402 m

2.2. Données et performance du réseau hydraulique

2.2.1. Production

Mois	Production (m ³ /mois)	Hr pompage (hr/mois)	Litres Gazole consommés	Jours production/mois	Fuites de production (m ³)	Durée pompage/jour (hr)	Débit pompage moyen (m ³ /hr)
Janvier	11484,23	343,15	4632,53	31	31	1500	33,47
Février	11621,31	196,25	2747,5	23	23	1000	59,22
Mars	6290.83	221.55	2964.08	31	31	800	28.39

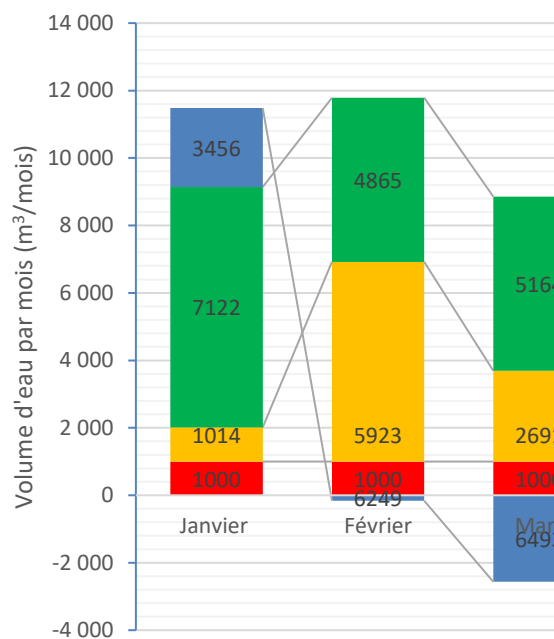
2.2.2. Distribution

Mois	Distribution BF et abonnés (m ³ /mois)	Jours distribution/mois	Fuites distribution (m ³ /mois)
Janvier	8136,12	31	1000
Février	10787,23	23	1000
Mars	7854.93	31	1000

2.2.3. Bilan

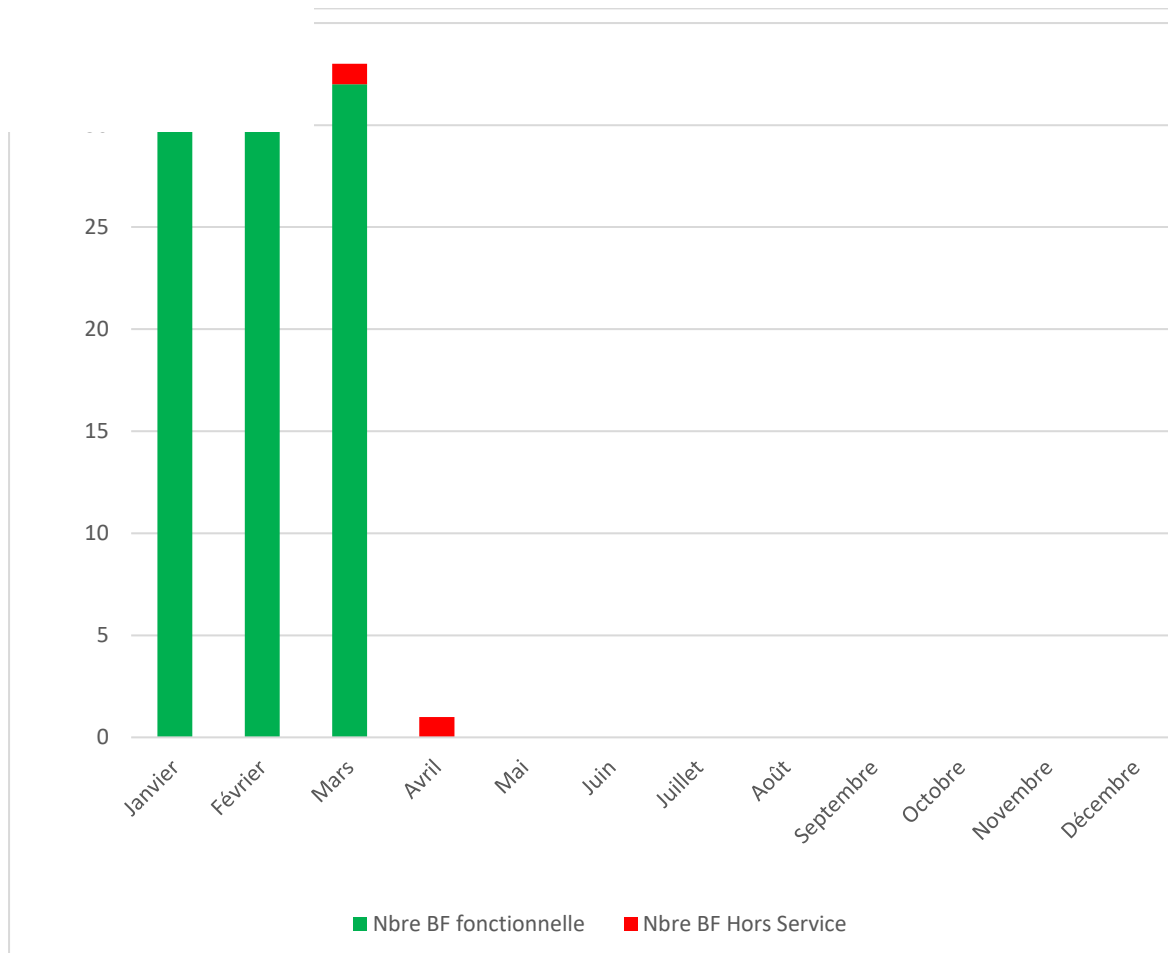
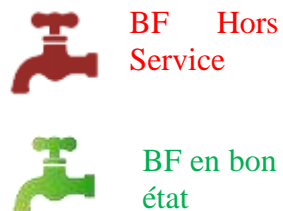
Mois	Volume comptabilisé BF + Abonnés (m ³ /mois)	Rendement primaire réseau (%)	Volume non comptabilisé (m ³ /mois)	Volume utilisé total par jour (m ³ /jr)	Cons. Spécifique (L/hab/jr)	Indice Linéaire de Pertes (m ³ /jr/km)
Janvier	7121,72	62	1014,4	262,5	5,2	0,26
Février	4864,64	42	5922,6	469	9,4	1,55
Mars	5163.62	82	2691.3	253.4	5.1	0.70

Trimes
tre 1



2.3. Etat des ouvrages hydrauliques

Sur un total de 32 points d'eau, on a constaté que pour ce 1^{er} trimestre 2022, 31 en janvier, 31 en février et 31 en mars étaient opérationnels.



2.4. Qualité de l'eau

Date	Type Infrastructure	Numéro Ouvrage	Concentration chlore (mg/L)	Compartiment					Nbre total plus probable/100 ml
				1	2	3	4	5	
				10 mL	30 mL	56 mL	3 mL	1mL	
10/01/2023	BF réseau	15	6						
	BF réseau	25	6						
	BF réseau	30	6						
15/02/2023	BF réseau	27	6						
	BF réseau	01	6						
20/03/2023	BF réseau	32	6						

2.5. Gestion des plaintes

a) Plaintes des consommateurs

Les plaintes des usagers restent toujours d'actualité, ils réclament de :

1. Faire le plein des récipients (bassins, bidons,...) ;
2. Réclamation d'une petite quantité d'eau pour le rinçage de leurs récipients ;
3. Réclamation des installations sanitaires notamment les toilettes ainsi que les urinoirs modernes sur chaque point de vente ;
4. Arrêt du service de distribution à l'heure qui convient pour permettre aux personnes qui reviennent du travail tardivement d'avoir aussi accès au service de l'eau ;

2.6. Entretien et Maintenance

- 1) Remplacement compteurs des prépayés anciens modèle par les nouveaux chez les abonnés;
- 2) Remplacement robinets BF 4, 16, 2 et 27
- 3) Remplacement par le casing de la tuyauterie distribution au niveau de GMI.
- 4) la réhabilitation des bornes fontaines(15, 20 et 22) et la modification de la ligne de distribution dont la tuyauterie a été broyée par la réhabilitation des routes de la Ville de Mbuji mayi
- 5) Entretien et nettoyage des BF.
- 6) Versement chlore dans le réservoir tous les jours.
- 7) Production chlore 5 à 30 litres par jour.
- 8) Entretien et nettoyage Groupe Electrogène de 100KVA au forage.

- 9) Remplacement compteurs des prépayés low bat par les ordinaires chez les abonnés «+/-28 pièces» ;
- 10) Remplacement compteurs BF à problème : BF 28 à 2'', BF 26 à 1''.
- 11) Test GPS TWILIO dans tous les 11 Réseaux.
- 12) la fixation clapet anti-retour BF 15 et 17.
- 13) Remplacement cartes SIM et paramétrage des compteurs prépayés ;
- 14) Test de connectivité des nouveaux compteurs prépayés à Tshibombo ;
- 15) Modification de plusieurs axes de distribution suite à la destruction des tuyaux pour les constructeurs des routes ;

3. Compte Rendu Financier

3.1. Bilan Financier

3.1.1. Dépenses

Mois	Charge de production (CDF)	
	Carburant Générateur	Autre charge de production
Janvier	30 399 700	64 000
Février	18363000	64000
Mars	16276000	71000

Mois	Cout du personnel de Gestion (CDF)						
	Gérant	Comptable	Caissier	Plombier	Sentinelle	Fontainier	Autre charges
Janvier	800900	583700	466550	200000	245000	1788450	637000
Février	300000	0	20000	499100	291900	3943150	
Mars	700000	680000	731700	1029600	239350	4135700	

Mois	Charge fixe d'amortissement (CDF)	Charge fixe d'entretien (CDF)	Charge de fonctionnement (CDF)			
			Jeton CA	Frais AG	Cotisation Interasurep	Autre Frais de Fonctionnement
Janvier	1 150 000	3 787 950	1 757 000	5000	1 200 000	4138100
Février	0	3 886 350	620 000	0	100 000	4 177 550
Mars	100 000	3316000	1115000	355000	1164500	3778650

Total dépenses :114 416 700 CDF

3.1.2. Recettes

Recette de la Vente d'Eau (CDF)	Don ONG ou Gouvernement équivalent monétaire (CDF)	Remarque sur don
46446000		
33133850		
34895450		

Total Recettes :114 475 300 CDF

3.2. Bilan en trésorerie à l'échéance du trimestre

Montant dans la caisse	Montant en Banque	Montant en mouvement engagé (hors caisse, hors comptabilité)
250700	2411300	

4. SUIVI DE REUNIONS DE L'ASUREP

TYPE DE REUNION	DATE	QUORUM	Existence PV	Observation /commentaire
Conseil d'administration				Le PCA Faustin NKAYA absent car étant malade.
Assemblée Générale				
Commission de contrôle				
Commune/chefferie				
Autres				

5 .DIFFICULTÉS ET CONTRAINTES

Les pluies, la hausse de prix de gasoil sur le marché, l'interconnexion qui crée les arrêts.

6. RECOMMANDATIONS ET SUGGESTIONS

La dotation d'un forage propre au R11 dans un bref délai par le partenaire Enabel est une solution idoine pour assurer la régularité de la desserte en eau potable ; La réhabilitation de presque toutes les Bornes Fontaines y compris le remplacement des robinets.

Rapport sincère, fait le 10 Avril 2023 à Mbujimayi, Commune de Kanshi

Le gérant : Nom - prénom et signature

MUKENDI MUTOMBO Pierre Célestin



Le Secrétaire Comptable : Nom - prénom et signature

TSHIBAKA KANDA Richard



Le Responsable Technique : Nom - prénom et signature

TSHIBANGU LUBUYI Ferdinand



Annexe A.

Année 2023	2023/ Janvier					
	Début mois	Fin mois	Distribution (m³)	Prix à la BF (CDF)	Recette (CDF)	Vol vendu (m3)
Distribution BF1	5418.2111	5600.429	182.22	150.00	1,013,300.00	155.37
Distribution BF2	2601.1703	2708.1305	106.96	150.00	532,950.00	81.72
Distribution BF2			0.00	150.00		0.00
Distribution BF3	3721.0188	3951.362	230.34	150.00	1,310,650.00	200.97
Distribution BF3			0.00	150.00		0.00
Distribution BF4			0.00	150.00		0.00
Distribution BF4	940.306	1054.7888	114.48	150.00	640,700.00	98.24
Distribution BF5	6202.5	6507.9899	305.49	150.00	1,563,450.00	239.73
Distribution BF5			0.00	150.00		0.00
Distribution BF6	1618.5664	1691.724	73.16	150.00	394,450.00	60.48
Distribution BF7			0.00	150.00		0.00
Distribution BF7	711.7877	779.1997	67.41	150.00	302,550.00	46.39
Distribution BF8	1682.5277	1739.6918	57.16	150.00	251,300.00	38.53
Distribution BF9	1869.5238	1909.258	39.73	150.00	230,300.00	35.31
Distribution BF10	4137.7505	4229.2165	91.47	150.00	488,000.00	74.83
Distribution BF11	1553.5058	1641.3288	87.82	150.00	401,750.00	61.60
Distribution BF12			0.00	150.00		0.00
Distribution BF12	1900.6058	1960.6739	60.07	150.00	301,800.00	46.28
Distribution BF13	8666.877	8761.811	94.93	150.00	500,300.00	76.71
Distribution BF14	30.8011	101.0413	70.24	150.00	373,550.00	57.28
Distribution BF14			0.00	150.00		0.00
Distribution BF15	893.6363	1220.8306	327.19	150.00	1,654,900.00	253.75
Distribution BF15			0.00	150.00		0.00
Distribution BF16			0.00	150.00	70,200.00	10.76
Distribution BF16			0.00	150.00		0.00
Distribution BF17			0.00	150.00		0.00
Distribution BF17	1196.8192	1267.6734	70.85	150.00	417,000.00	63.94
Distribution BF18			0.00	150.00		0.00
Distribution BF19	3966.5631	4155.3279	188.76	150.00	956,300.00	146.63
			0.00	150.00		0.00
Distribution BF20	793.9032	870.0352	76.13	150.00	474,900.00	72.82
Distribution BF21	1653.5859	1814.016	160.43	150.00	846,500.00	129.80
Distribution BF22	3698.3242	3772.8544	74.53	150.00	444,850.00	68.21

Distribution BF23			0.00	150.00		0.00
Distribution BF23	2587.4627	2840.027	252.56	150.00	1,361,450.00	208.76
Distribution BF24			0.00	150.00		0.00
Distribution BF24	1308.7045	1480.7745	172.07	150.00	995,200.00	152.60
Distribution BF25			0.00	150.00		0.00
Distribution BF25	1153.3266	1368.3402	215.01	150.00	1,275,600.00	195.59
Distribution BF26			0.00	150.00		0.00
Distribution BF26	671.3456	785.5508	114.21	150.00	734,800.00	112.67
Distribution BF27			0.00	150.00		0.00
Distribution BF28	16564.93	17544.55	979.62	150.00	5,384,650.00	825.65
Distribution BF28			0.00	150.00		0.00
			0.00	150.00		0.00
Distribution BF29	2327.3542	2510.9219	183.57	150.00	973,900.00	149.33
Distribution BF30	5446.9824	5567.6302	120.65	150.00	590,750.00	90.58
Distribution BF31	1914.6924	2007.8464	93.15	150.00	494,700.00	75.85
Distribution BF31			0.00	150.00		0.00
Distribution BF32	1340.0272	1431.7972	91.77	150.00	469,350.00	71.97
ALEXIS TSHIDIBI			0.00	150.00	100,000.00	15.33
AMANI BIENDA ALPHA			0.00	150.00	330,000.00	50.60
ARCHADIE BUKASA			0.00	150.00	59,500.00	9.12
AUGUSTIN MPOYI			0.00	150.00	13,000.00	1.99
MARIE CLAIRE MISHIKA	3002.024	3100.2904	98.27	150.00	385,300.00	59.08
BANZA NDALA			0.00	150.00	30,000.00	4.60
BIBLIOTHEQUE LA VOIX DE DIEU			0.00	150.00	-	0.00
CLEMENT MUTOMBO	479.64	479.64	0.00	150.00	-	0.00
COBIN TSHIBANDA	76.2312	79.12	2.89	150.00	-	0.00
DIDIER NUMBI			0.00	150.00	113,450.00	17.40
EMMAN MUKENDI			0.00	150.00	99,000.00	15.18
DOCTEUR DISASHI 1			0.00	150.00	-	0.00
DOCTEUR DISASHI 2			0.00	150.00	-	0.00
EMILE NSONGOSONGO			0.00	150.00	40,000.00	6.13
EMMANUEL KAMBIDIBUA			0.00	150.00	-	0.00
EMMANUEL KANGUDIA			0.00	150.00	86,000.00	13.19

ETIENNE TSHIBANDA			0.00	150.00	46,800.00	7.18
FANNY KABANGA			0.00	150.00	-	0.00
FELICITE NGALULA			0.00	150.00	132,000.00	20.24
FRANCOIS KABUIKA GIZ	889.6565	900.0854	10.43	150.00	-	0.00
FRANK KASANGANA			0.00	150.00	292,350.00	44.83
HOTEL METROPOLE	93.3205	144.8888	51.57	150.00	1,200,000.00	184.00
JEAN CLAUDE MUSAAS			0.00	150.00	97,200.00	14.90
CLAUDE TSHIKALA			0.00	150.00	-	0.00
MADO NTUMBA	57.7792	105.6615	47.88	150.00	318,850.00	48.89
JIBIKILA MBUYAMBA			0.00	150.00	-	0.00
JOHN KALALA			0.00	150.00	660,000.00	101.20
JOSE MBAYA			0.00	150.00	79,000.00	12.11
JOSEPH NKONGOLO	268.5268	276.3676	7.84	150.00	48,800.00	7.48
KABAMBI WA BEYA			0.00	150.00	-	0.00
KAYEMBA TSHIKUYA	198.2228	231.8744	33.65	150.00	-	0.00
KAZU MULOWAYI			0.00	150.00	-	0.00
LAMBERT MBUYI MUDIBU RESI 1	395.8089	453.6724	57.86	150.00	221,000.00	33.89
LAMBERT MBUYI MUDIBU 2	2351.6089	2455.2087	103.60	150.00	581,700.00	89.19
LEON NTAMBUA	134.9477	148.7163	13.77	150.00	367,500.00	56.35
LEONARD MUTOMBO MUENGA	131.1403	138.0647	6.92	150.00	45,000.00	6.90
LIEVIN TSHIMANGA			0.00	150.00	-	0.00
MADO TSHINGUTA			0.00	150.00	79,000.00	12.11
JEAN GUYLAIN MUSASA	12.7858	17.4851	4.70	150.00	-	0.00
MATTHIEU DITU	256.9508	269.0027	12.05	150.00	-	0.00
MICHEL NGELEKA	484.0312	496.9914	12.96	150.00	-	0.00
MOTEL CHICAGO			0.00	150.00	20,000.00	3.07
NESTOR MBIKAYI	545.615	554.434	8.82	150.00	-	0.00
PAPY KABONGO			0.00	150.00	-	0.00
PAULINE KALUMBA			0.00	150.00	-	0.00
PAULINE NSAMBA			0.00	150.00	76,000.00	11.65
PIERROT MUKADI			0.00	150.00	40,000.00	6.13
RAOUL BUSHIRI			0.00	150.00	-	0.00
RICHARD MBENGA			0.00	150.00	110,000.00	16.87

RICHARD MUTEBA			0.00	150.00	64,000.00	9.81
ROGER KABAMBA			0.00	150.00	44,000.00	6.75
ROGER MILAMBO			0.00	150.00	490,000.00	75.13
SAMY TSHIBANGU			0.00	150.00	46,000.00	7.05
SYLVAIN MUKENDI	282.1821	289.23	7.05	150.00	153,500.00	23.54
SYLVIE KANJINGA	183.3983	189.3586	5.96	150.00	30,000.00	4.60
THARCISSE KALONJI			0.00	150.00	86,000.00	13.19
JEAN KANKOLONGO			0.00	150.00	35,500.00	5.44
ADEPK	11532.65	11868.19	335.54	150.00	3,420,350.00	524.45
TONNY MAFUTA			0.00	150.00	-	0.00
TSHIMANGA MULANGALA	550.233	554.7311	4.50	150.00	-	0.00
VALENTIN KABONGO			0.00	150.00	48,000.00	7.36
MAMIE NGOMBA			0.00	150.00	44,000.00	6.75
XAVIER BANZA	175.8859	180.5748	4.69	150.00	-	0.00
ZOE ACTION CONTRE LA FAIM	126.6093	163.8372	37.23	150.00	1,331,350.00	204.14
ZOE KALALA RESIDENCE			0.00	150.00	-	0.00
BULANDA NKESE	126.1125	130.716	4.60	150.00	42,050.00	6.45
JEAN ROCY KABONGO			0.00	150.00	-	0.00
NESTOR MANGIMA PANLU	279.95	279.95	0.00	150.00	-	0.00
COLIN ELUMBA NGOY			0.00	150.00	-	0.00
KASONGO BATU	112.2	119.3	7.10	150.00	-	0.00
MOISE KALALA			0.00	150.00	22,000.00	3.37
MULOWAYI AUGU	156.1284	159.8301	3.70	150.00	-	0.00
FRANCOIS MALABA KANYIKI	276.5337	301.5713	25.04	150.00	336,500.00	51.60
DIEUDONNE KALUBA DIBUA	89.7264	97.0221	7.30	150.00	13,500.00	2.07
BENOIT MBUYI	501.4708	595.9184	94.45	150.00	623,450.00	95.60
MARCELLIN BILOMBA	312.1428	318.6514	6.51	150.00	-	0.00
ARTHUR NTUMBA KAVUMBU	219.052	234.631	15.58	150.00	300,000.00	46.00
ELISEE BABALE KALENDA			0.00	150.00	112,800.00	17.30
BONI TSHIAMALA			0.00	150.00	60,000.00	9.20
ALFRED MUANANDIBU 1			0.00	150.00	-	0.00
MITEWU KAZEMBE	667.0071	721.723	54.72	150.00	264,750.00	40.60
ASUMANI/RVA			0.00	150.00	210,000.00	32.20

JEAN MUKENDI			0.00	150.00	66,000.00	10.12
EFOLOKO ELOMBE	37.747	47.5085	9.76	150.00	49,300.00	7.56
AVON MAYOMBO	154.8715	160.275	5.40	150.00	-	0.00
DAVID TSHIBUABUA	98.2514	98.7249	0.47	150.00	53,500.00	8.20
HENRI KATUMANGA	1433.584	1551.016	117.43	150.00	759,350.00	116.43
ALEXIS LUTSHIAKA	22.8556	29.4501	6.59	150.00	21,000.00	3.22
DIDIER KABEYA WA BANZA	198.9249	198.9249	0.00	150.00	-	0.00
TEMOINS DE JEHOVAH	153.0817	180.3601	27.28	150.00	35,950.00	5.51
PIERRE CELESTIN MUKENDI	95.8723	115.4711	19.60	150.00	-	0.00
JDD KALOMBO WA MPUNGA	141.25	141.25	0.00	150.00	-	0.00
META MUAMBA	1522.609	1791.5245	268.92	150.00	361,650.00	55.45
MAO MBUYI	364.58	381.2033	16.62	150.00	121,450.00	18.62
WILLIAM KASONGO	87.3618	90.9429	3.58	150.00	-	0.00
MARIE PAULE LEMBA	42.569	46.5706	4.00	150.00	71,400.00	10.95
JOLIE MIANDA KABULU	82.1034	93.0254	10.92	150.00	92,900.00	14.24
ALFRED MUANANDIBU 2	133.5168	136.3521	2.84	150.00	-	0.00
JP KAYEMBA NTUMBA			0.00	150.00	20,000.00	3.07
MADO MBIYA LUANGOMBA			0.00	150.00	-	0.00
BERTHE NGALULA 1	118.23	118.23	0.00	150.00	-	0.00
BERTHE NGALULA 2	90.9375	95.8133	4.88	150.00	21,500.00	3.30
IRENE KAMUANYA	50.7576	62.9266	12.17	150.00	-	0.00
DAVID CIPONGU			0.00	150.00	71,900.00	11.02
JADOT KADIMA	876.9	961.6626	84.76	150.00	559,450.00	85.78
Béa NGOMBA	786.909	875.1599	88.25	150.00	416,300.00	63.83
STEPHANE MBENGA	439.4112	449.4179	10.01	150.00	167,250.00	25.65
LAURENT TSHITE	508.5919	546.9226	38.33	150.00	600,000.00	92.00
PONTIEN TSHIANYI			0.00	150.00	35,000.00	5.37
LOUIS D'OR NTUMBA			0.00	150.00	178,200.00	27.32
PATRICK MUKADI			0.00	150.00	66,000.00	10.12
KABAMBA NYAMA	372.4705	389.5088	17.04	150.00	68,300.00	10.47
SCOLA KANKOLONGO	308.0907	334.5488	26.46	150.00	80,850.00	12.40
BENJAMIN MBUYI			0.00	150.00	-	0.00
KABONGO CHRISTOPHE	1177.5159	1433.6355	256.12	150.00	356,200.00	54.62
HUBERT BEYA	271.5414	287.336	15.79	150.00	-	0.00
PAROLAT BIBOYI	42.3577	53.6469	11.29	150.00	-	0.00
STANIS	614.0109	619.2308	5.22		38,200.00	5.86

KANKOLONGO				150.00		
CICM	153.1957	153.1957	0.00	150.00	-	0.00
LAURENT TSHIBANGU MANDA	78.6632	94.0048	15.34	150.00	280,600.00	43.03
MUTEBA MALABA	60.2076	71.9849	11.78	150.00	61,000.00	9.35
CRISPIN KALUBI	175.8734	196.7256	20.85	150.00	84,200.00	12.91
THERESE KABOLA NGOYI	19.8642	25.6526	5.79	150.00	-	0.00
PATRICK NTUMBA	12.3621	31.4563	19.09	150.00	79,500.00	12.19
MARIE BILONDA LUNZENZA	22.3642	33.26	10.90	150.00	141,000.00	21.62
CLAUDE MBUYI	192.24	192.24	0.00	150.00	-	0.00
Jean Crispin MUKENDI	30.8716	47.5367	16.67	150.00	71,250.00	10.93
Christine NTUMBA	218.51	218.51	0.00	150.00	-	0.00
ALAIN MUIMBI	10.1434	19.6436	9.50	150.00	64,900.00	9.95
Guyline MUKAJIMUENYI	0.1292	134.2079	134.08	150.00	801,150.00	122.84
SAMY MUNTU	11.2611	18.4706	7.21	150.00	72,600.00	11.13
Abonné BF 16			0.00	150.00	877,850.00	134.60
Abonné BF 27			0.00	150.00	701,000.00	107.49
M3 CTMETER P		1032	1032.00	150.00		0.00
Total			8136.12		46446000.00	7121.72

	2023/Février					
	Début mois	Fin mois	Distribution (m ³)	Prix à la BF (CDF)	Recette (CDF)	Vol vendu (m3)
Distribution BF1	5600.429	5825.204	224.78	150.00	1, 282,150.00	196.60
Distribution BF2	2708.1305	2785.5948	77.46	150.00	354,250.00	54.32
Distribution BF2			0.00	150.00		0.00
Distribution BF3	3951.362	4070.7608	119.40	150.00	669,100.00	102.60
Distribution BF3			0.00	150.00		0.00
Distribution BF4			0.00	150.00		0.00
Distribution BF4	1054.7888	1105.9876	51.20	150.00	255,250.00	39.14
Distribution BF5	6507.9899	6760.9609	252.97	150.00	1, 362,050.00	208.85
Distribution BF5			0.00	150.00		0.00
Distribution BF6	1691.724	1729.7861	38.06	150.00	211,250.00	32.39
Distribution BF7			0.00	150.00		0.00
Distribution BF7	779.1997	822.0004	42.80	150.00	225,850.00	34.63
Distribution BF8	1739.6918	1788.6717	48.98	150.00	228,150.00	34.98
Distribution BF9	1909.258	1945.5032	36.25	150.00	188,300.00	28.87
Distribution BF10	4229.2165	4291.8107	62.59	150.00	387,500.00	59.42
Distribution BF11	1641.3288	1673.2882	31.96	150.00	130,400.00	19.99
Distribution BF12			0.00	150.00		0.00
Distribution BF12	1960.6739	1989.8294	29.16	150.00	148,500.00	22.77
Distribution BF13	8761.811	8807.546	45.74	150.00	247,500.00	37.95

Distribution BF14	101.0413	1475.5206	1374.48	150.00	204,050.00	31.29
Distribution BF14			0.00	150.00		0.00
Distribution BF15	1220.8306	1462.8791	242.05	150.00	1, 250,500.00	191.74
Distribution BF15			0.00	150.00		0.00
Distribution BF16			0.00	150.00		0.00
Distribution BF16			0.00	150.00		0.00
Distribution BF17			0.00	150.00		0.00
Distribution BF17	1267.6734	1327.9975	60.32	150.00	343,600.00	52.69
Distribution BF18			0.00	150.00		0.00
Distribution BF19	4155.3279	4263.5789	108.25	150.00	567,600.00	87.03
			0.00	150.00		
Distribution BF20	870.0352	944.4005	74.37	150.00	417,800.00	64.06
Distribution BF21	1814.016	1926.6875	112.67	150.00	644,650.00	98.85
Distribution BF22	3772.8544	3827.3186	54.46	150.00	274,850.00	42.14
Distribution BF23			0.00	150.00		0.00
Distribution BF23	2840.027	3009.5344	169.51	150.00	934,850.00	143.34
Distribution BF24			0.00	150.00		0.00
Distribution BF24	1480.7745	1607.1941	126.42	150.00	804,250.00	123.32
Distribution BF25			0.00	150.00		0.00
Distribution BF25	1368.3402	1533.7305	165.39	150.00	886,700.00	
Distribution BF26	785.5508	787.86	2.31	150.00		0.00
Distribution BF26	0.2664	32.9927	32.73	150.00	198,100.00	30.38
Distribution BF27			0.00	150.00		0.00
Distribution BF28	17544.55	17544.55	0.00	150.00	3, 370,000.00	516.73
Distribution BF28	3.3	677.92	674.62	150.00		0.00
			0.00	150.00		
Distribution BF29	2510.9219	2637.5805	126.66	150.00	649,800.00	99.64
Distribution BF30	5567.6302	5636.0234	68.39	150.00	387,000.00	59.34
Distribution BF31	2007.8464	2089.4901	81.64	150.00	423,850.00	64.99
Distribution BF31			0.00	150.00		0.00
Distribution BF32	1431.7972	1531.1119	99.31	150.00	521,250.00	
ALEXIS TSHIDIBI			0.00	150.00	107,500.00	16.48
AMANI BIENDA ALPHA	794.4946	798.5137	4.02	150.00	33,000.00	5.06
ARCHADIE BUKASA			0.00	150.00	60,000.00	9.20
AUGUSTIN MPOYI			0.00	150.00	-	0.00
MARIE CLAIRE MISHIKA	3100.2904	3144.7616	44.47	150.00	161,250.00	24.73
BANZA NDALA	50.3954	51.7326	1.34	150.00	-	0.00
BIBLIOTHEQUE LA VOIX DE DIEU			0.00	150.00	-	0.00
CLEMENT MUTOMBO	479.64	479.64	0.00	150.00	-	0.00
COBIN TSHIBANDA	79.12	94.6232	15.50	150.00	-	0.00
DIDIER NUMBI			0.00	150.00	53,000.00	8.13
EMMAN MUKENDI	235.5673	244.8946	9.33	150.00	-	0.00
DOCTEUR DISASHI 1			0.00	150.00	-	0.00
DOCTEUR DISASHI 2			0.00	150.00	40,000.00	6.13

EMILE NSONGOSONGO	149.3035	156.8162	7.51	150.00	-	0.00
EMMANUEL KAMBIDIBUA			0.00	150.00	-	0.00
EMMANUEL KANGUDIA			0.00	150.00	-	0.00
ETIENNE TSHIBANDA	325.9516	331.1202	5.17	150.00	-	0.00
FANNY KABANGA			0.00	150.00	-	0.00
FELICITE NGALULA			0.00	150.00	66,000.00	10.12
FRANCOIS KABUIKA GIZ	900.0854	914.6156	14.53	150.00	-	0.00
FRANK KASANGANA			0.00	150.00	66,000.00	10.12
HOTEL METROPOLE	144.8888	396.6027	251.71	150.00	1, 259,400.00	193.11
JEAN CLAUDE MUSAAS			0.00	150.00	132,000.00	20.24
CLAUDE TSHIKALA	91.5343	123.1902	31.66	150.00	-	0.00
MADO NTUMBA	105.6615	129.5053	23.84	150.00	-	0.00
JIBIKILA MBUYAMBA			0.00	150.00	-	0.00
JOHN KALALA			0.00	150.00	660,000.00	101.20
JOSE MBAYA	835.12	838.7177	3.60	150.00	12,000.00	1.84
JOSEPH NKONGOLO	276.3676	280.3262	3.96	150.00	41,200.00	6.32
KABAMBI WA BEYA	30.25	33.4067	3.16	150.00	100,000.00	15.33
KAYEMBA TSHIKUYA	231.8744	341.6748	109.80	150.00	238,500.00	36.57
KAZU MULOWAYI	104.7147	115.3263	10.61	150.00	-	0.00
LAMBERT MBUYI MUDIBU RESI 1	453.6724	494.5143	40.84	150.00	851,950.00	130.63
LAMBERT MBUYI MUDIBU 2	2455.2087	2533.2324	78.02	150.00	228,600.00	35.05
LEON NTAMBUA	148.7163	175.9274	27.21	150.00	140,050.00	21.47
LEONARD MUTOMBO MUENGA	138.0647	145.2177	7.15	150.00	-	0.00
LIEVIN TSHIMANGA			0.00	150.00	-	0.00
MADO TSHINGUTA			0.00	150.00	98,000.00	15.03
JEAN GUYLAIN MUSASA	17.4851	23.0467	5.56	150.00	-	0.00
MATTHIEU DITU	269.0027	279.4004	10.40	150.00	100,000.00	15.33
MICHEL NGELEKA	496.9914	496.9914	0.00	150.00	-	0.00
MOTEL CHICAGO			0.00	150.00	-	0.00
NESTOR MBIKAYI	554.434	562.478	8.04	150.00	-	0.00
PAPY KABONGO			0.00	150.00	63,000.00	9.66
PAULINE KALUMBA			0.00	150.00	-	0.00
PAULINE NSAMBA			0.00	150.00	-	0.00
PIERROT MUKADI			0.00	150.00	40,000.00	6.13
RAOUL BUSHIRI	143.9506	155.3965	11.45	150.00	-	0.00
RICHARD MBENGA			0.00	150.00	-	0.00

RICHARD MUTEBA	297.835	325.41	27.58	150.00	20,000.00	3.07
ROGER KABAMBA	2143.7606	2148.6147	4.85	150.00	81,000.00	12.42
ROGER MILAMBO			0.00	150.00	264,000.00	40.48
SAMY TSHIBANGU			0.00	150.00	45,500.00	6.98
SYLVAIN MUKENDI	289.23	289.23	0.00	150.00	166,500.00	25.53
SYLVIE KANJINGA	189.3586	189.3586	0.00	150.00	39,000.00	5.98
THARCISSE KALONJI			0.00	150.00	22,000.00	3.37
JEAN KANKOLONGO	74.8496	82.7004	7.85	150.00	33,000.00	5.06
ADEPK	11868.19	15414.95	3546.76	150.00	2,191,700.00	336.06
TONNY MAFUTA	50.8561	53.6122	2.76	150.00	89,000.00	13.65
TSHIMANGA MULANGALA	554.7311	558.0738	3.34	150.00	-	0.00
VALENTIN KABONGO			0.00	150.00	59,400.00	9.11
MAMIE NGOMBA	824.5236	829.4758	4.95	150.00	-	0.00
XAVIER BANZA	180.5748	234.2725	53.70	150.00	709,000.00	108.71
ZOE ACTION CONTRE LA FAIM	163.8372	196.5901	32.75	150.00	262,100.00	40.19
ZOE KALALA RESIDENCE	52.0585	64.9103	12.85	150.00	-	0.00
BULANDA NKESE	130.716	139.5427	8.83	150.00	30,400.00	4.66
JEAN ROCY KABONGO			0.00	150.00		0.00
NESTOR MANGIMA PANLU	279.95	279.95	0.00	150.00	-	0.00
COLIN ELUMBA NGOY			0.00	150.00	-	0.00
KASONGO BATU	119.3	119.3586	0.06	150.00	60,000.00	9.20
MOISE KALALA			0.00	150.00	45,000.00	6.90
MULOWAYI AUGU	159.8301	162.7989	2.97	150.00	116,000.00	17.79
FRANCOIS MALABA KANYIKI	301.5713	310.6558	9.08	150.00	165,000.00	25.30
DIEUDONNE KALUBA DIBUA	97.0221	104.8418	7.82	150.00	-	0.00
BENOIT MBUYI	595.9184	643.4701	47.55	150.00	313,900.00	48.13
MARCELLIN BILOMBA	318.6514	323.6115	4.96	150.00	56,700.00	8.69
ARTHUR NTUMBA KAVUMBU	234.631	244.53	9.90	150.00	200,000.00	30.67
ELISEE BABALE KALENDA			0.00	150.00	41,700.00	6.39
BONI TSHIAMALA	75.8013	81.1359	5.33	150.00	-	0.00
ALFRED MUANANDIBU 1			0.00	150.00	-	0.00
MITEWU KAZEMBE	721.723	762.9151	41.19	150.00	317,150.00	48.63
ASUMANI/RVA			0.00	150.00	-	0.00
JEAN MUKENDI	1543.016	1549.0115	6.00	150.00	-	0.00
EFOLOKO ELOMBE	47.5085	58.0897	10.58	150.00	-	0.00
AVON MAYOMBO	160.275	165.5246	5.25	150.00	79,200.00	12.14
DAVID TSHIBUABUA	98.7249	98.7273	0.00	150.00	-	0.00
HENRI KATUMANGA	1551.016	1617.051	66.03	150.00	397,000.00	60.87
ALEXIS LUTSHIACA	29.4501	32.5056	3.06	150.00	43,500.00	6.67
DIDIER KABEYA WA BANZA	198.9249	198.9249	0.00	150.00	-	0.00
TEMOINS DE JEHOVAH	180.3601	191.7807	11.42	150.00	180,050.00	27.61

PIERRE CELESTIN MUKENDI	115.4711	124.125	8.65	150.00	-	0.00
JDD KALOMBO WA MPUNGA	141.25	141.25	0.00	150.00	-	0.00
META MUAMBA	1791.5245	2022.9898	231.47	150.00	254,700.00	39.05
MAO MBUYI	381.2033	393.2815	12.08	150.00	-	0.00
WILLIAM KASONGO	90.9429	90.9429	0.00	150.00	-	0.00
MARIE PAULE LEMBA	46.5706	49.1235	2.55	150.00	26,500.00	4.06
JOLIE MIANDA KABULU	93.0254	106.2126	13.19	150.00	91,900.00	14.09
ALFRED MUANANDIBU 2	136.3521	143.4351	7.08	150.00	20,100.00	3.08
JP KAYEMBA NTUMBA	188.231	193.3228	5.09	150.00	-	0.00
MADO MBIYA LUANGOMBA			0.00	150.00	-	0.00
BERTHE NGALULA 1	118.23	118.23	0.00	150.00	-	0.00
BERTHE NGALULA 2	95.8133	95.957	0.14	150.00	-	0.00
IRENE KAMUANYA	50.914	59.9432	9.03	150.00	-	0.00
DAVID CIPONGU	40.1204	62.1962	22.08	150.00	-	0.00
JADOT KADIMA	961.6626	1014.5746	52.91	150.00	600,000.00	92.00
Béa NGOMBA	875.1599	931.5331	56.37	150.00	441,300.00	67.67
STEPHANE MBENGA	449.4179	458.8137	9.40	150.00	69,300.00	10.63
LAURENT TSHITE	546.9226	550.0036	3.08	150.00	200,000.00	30.67
PONTIEN TSHIANYI			0.00	150.00	35,000.00	5.37
LOUIS D'OR NTUMBA	229.9558	236.0937	6.14	150.00	-	0.00
PATRICK MUKADI			0.00	150.00	33,100.00	5.08
KABAMBA NYAMA	389.5088	399.5321	10.02	150.00	68,800.00	10.55
SCOLA KANKOLONGO	334.5488	353.275	18.73	150.00	93,700.00	14.37
BENJAMIN MBUYI	798.5137	800.6008	2.09	150.00	20,250.00	3.11
KABONGO CHRISTOPHE	1433.6355	1691.8166	258.18	150.00	302,700.00	46.41
HUBERT BEYA	287.336	303.051	15.72	150.00	-	0.00
PAROLAT BIBOYI	53.6469	60.6059	6.96	150.00	74,500.00	11.42
STANIS KANKOLONGO	619.2308	620.453	1.22	150.00	-	0.00
CICM	153.1957	153.1957	0.00	150.00	-	0.00
LAURENT TSHIBANGU MANDA	94.0048	119.3848	25.38	150.00	101,250.00	15.53
MUTEBA MALABA	71.9849	83.9372	11.95	150.00	70,000.00	10.73
CRISPIN KALUBI	196.7256	229.1311	32.41	150.00	137,700.00	21.11
THERESE KABOLA NGOYI	25.6526	27.4588	1.81	150.00	-	0.00
PATRICK NTUMBA	31.4563	31.4563	0.00	150.00	62,000.00	9.51
MARIE BILONDA LUNZENZA	33.26	43.5959	10.34	150.00	-	0.00
CLAUDE MBUYI	192.24	192.24	0.00	150.00	-	0.00
Jean Crispin MUKENDI	47.5367	63.4132	15.88	150.00	110,000.00	16.87
Christine NTUMBA	218.51	218.51	0.00	150.00	-	0.00
ALAIN MUIMBI	19.6436	26.5844	6.94	150.00	-	0.00
Guyline MUKAJIMUENYI	134.2079	267.0104	132.80	150.00	987,550.00	151.42
SAMY MUNTU	18.4706	23.7843	5.31	150.00	46,000.00	7.05
Abonné BF 16			0.00	150.00	617,950.00	94.75
Abonné BF 27			0.00	150.00	521,200.00	79.92
M3 CTMETER P			491.00	150.00		0.00
Total			10787.23		33133850.00	4864.64

2023/ Mars						
	Début mois	Fin mois	Distribution (m ³)	Prix à la BF (CDF)	Recette (CDF)	Vol vendu (m ³)
Distribution BF1	5825.204	6053.90 6	228.70	150.00	1,250,700.00	191.77
Distribution BF2	2785.594 8	2871.98 1	86.39	150.00	380,150.00	58.29
Distribution BF2			0.00	150.00		0.00
Distribution BF3	4070.760 8	4225.46 1	154.70	150.00	868,900.00	133.23
Distribution BF3			0.00	150.00		
Distribution BF4			0.00	150.00		0.00
Distribution BF4	1105.987 6	1160.53	54.54	150.00	270,050.00	41.41
Distribution BF5	6760.960 9	7083.06 6	322.11	150.00	1,685,250.00	258.41
Distribution BF5			0.00	150.00		0.00
Distribution BF6	1729.786 1	1768.01	38.22	150.00	183,800.00	28.18
Distribution BF7			0.00	150.00		0.00
Distribution BF7	822.0004	851.170 4	29.17	150.00	111,650.00	17.12
Distribution BF8	1788.671 7	1834.19 2	45.52	150.00	197,000.00	30.21
Distribution BF9	1945.503 2	1975.02 3	29.52	150.00	150,850.00	23.13
Distribution BF10	4291.810 7	4356.10 2	64.29	150.00	311,050.00	47.69
Distribution BF11	1673.288 2	1686.47 3	13.18	150.00	243,950.00	37.41
Distribution BF12			0.00	150.00		0.00
Distribution BF12	1989.829 4	2035.85 4	46.02	150.00	206,300.00	31.63
Distribution BF13	8807.546	8854.65	47.10	150.00	208,300.00	31.94
Distribution BF14	1475.520 6	1508.52 1	33.00	150.00	130,900.00	20.07
Distribution BF14			0.00	150.00		0.00
Distribution BF15	1462.879 1	1703.04 3	240.16	150.00	1,303,850.00	199.92
Distribution BF15			0.00	150.00		0.00
Distribution BF16			0.00	150.00		0.00
Distribution BF16	33.4078	61.2605	27.85	150.00	130,050.00	19.94
Distribution BF17			0.00	150.00		0.00
Distribution BF17	1327.997 5	1388.3	60.30	150.00	299,100.00	45.86
Distribution BF18			0.00	150.00		0.00

Distribution BF19	4263.578 9	4368.21	104.63	150.00	524,650.00	80.45
			0.00	150.00		
Distribution BF20	944.4005	1022.50 6	78.11	150.00	413,800.00	63.45
Distribution BF21	1926.687 5	2037.91 7	111.23	150.00	596,300.00	91.43
Distribution BF22	3827.318 6	3881.73 6	54.42	150.00	240,600.00	36.89
Distribution BF23			0.00	150.00		0.00
Distribution BF23	3009.534 4	3196.68 3	187.15	150.00	1,080,850.00	165.73
Distribution BF24			0.00	150.00		0.00
Distribution BF24	1607.194 1	1747.88	140.69	150.00	809,750.00	124.16
Distribution BF25			0.00	150.00		0.00
Distribution BF25	1533.730 5	1683.61	149.88	150.00	854,250.00	
Distribution BF26			0.00	150.00		0.00
Distribution BF26	32.9927	76.19	43.20	150.00	195,900.00	30.04
Distribution BF27			0.00	150.00		0.00
Distribution BF28			0.00	150.00		0.00
Distribution BF28	677.92	1352.64	674.72	150.00	3,679,350.00	564.17
			0.00	150.00		
Distribution BF29	2637.580 5	2726.27 1	88.69	150.00	410,850.00	63.00
Distribution BF30	5636.023 4	5688.62 2	52.60	150.00	275,800.00	42.29
Distribution BF31	2089.490 1	2146.85 1	57.36	150.00	312,250.00	47.88
Distribution BF31			0.00	150.00		0.00
Distribution BF32	1531.111 9	1603.99 6	72.88	150.00	365,450.00	
ALEXIS TSHIDIBI			0.00	150.00	100,000.00	15.33
AMANI BIENDA ALPHA			0.00	150.00		0.00
ARCHADIE BUKASA			0.00	150.00	60,000.00	9.20
AUGUSTIN MPOYI			0.00	150.00		0.00
MARIE CLAIRE MISHIKA	3144.761 6	3185.93	41.17	150.00	140,500.00	21.54
BANZA NDALA	51.7326	55.23	3.50	150.00		0.00
BIBLIOTHEQUE LA VOIX DE DIEU			0.00	150.00		0.00

CLEMENT MUTOMBO	479.64	479.64	0.00	150.00		0.00
COBIN TSHIBANDA	94.6232	106.4339	11.81	150.00		0.00
DIDIER NUMBI			0.00	150.00	69,000.00	10.58
EMMAN MUKENDI			0.00	150.00	99,000.00	15.18
ROLLAND KATUMBI			0.00	150.00		0.00
DOCTEUR DISASHI 2			0.00	150.00	40,000.00	6.13
EMILE NSONGOSONGO			0.00	150.00	99,600.00	15.27
EMMANUEL KAMBIDIBUA			0.00	150.00		0.00
EMMANUEL KANGUDIA			0.00	150.00	66,000.00	10.12
ETIENNE TSHIBANDA			0.00	150.00	49,050.00	7.52
FANNY KABANGA			0.00	150.00	147,000.00	22.54
FELICITE NGALULA			0.00	150.00	99,000.00	15.18
FRANCOIS KABUIKA GIZ	914.6156	931.4234	16.81	150.00		0.00
FRANK KASANGANA			0.00	150.00	140,000.00	21.47
HOTEL METROPOLE			0.00	150.00	705,700.00	108.21
JEAN CLAUDE MUSAAS			0.00	150.00	86,000.00	13.19
CLAUDE TSHIKALA			0.00	150.00	24,000.00	3.68
MADO NTUMBA	129.5053	137.2117	7.71	150.00	73,550.00	11.28
JIBIKILA MBUYAMBA			0.00	150.00		0.00
JOHN KALALA			0.00	150.00	660,000.00	101.20
JOSE MBAYA			0.00	150.00	12,000.00	1.84
JOSEPH NKONGOLO			0.00	150.00	150,000.00	23.00
KABAMBI WA BEYA			0.00	150.00		0.00
KAYEMBA TSHIKUYA	245.5433	254.8425	9.30	150.00	99,000.00	15.18

KAZU MULOWAYI	115.3263	139.654 2	24.33	150.00	70,000.00	10.73
LAMBERT MBUYI MUDIBU RESI 1	494.5143	552.824 7	58.31	150.00	515,000.00	78.97
LAMBERT MBUYI MUDIBU 2	2533.232 4	2626.17 5	92.94	150.00	269,000.00	41.25
LEON NTAMBUA			0.00	150.00	113,400.00	17.39
LEONARD MUTOMBO MUENGA	145.2177	152.619	7.40	150.00		0.00
GEORGES KABEYA			0.00	150.00	144,800.00	22.20
MADO TSHINGUTA			0.00	150.00	91,000.00	13.95
JEAN GUYLAIN MUSASA	23.0467	27.2116	4.16	150.00	36,500.00	5.60
MATTTHEIU DITU	279.4004	288.908 1	9.51	150.00		0.00
MICHEL NGELEKA	496.9914	496.991 4	0.00	150.00		0.00
MOTEL CHICAGO			0.00	150.00	20,000.00	3.07
NESTOR MBIKAYI	562.478	572.797	10.32	150.00		0.00
PAPY KABONGO			0.00	150.00		0.00
PAULINE KALUMBA			0.00	150.00		0.00
PAULINE NSAMBA			0.00	150.00	43,000.00	6.59
PIERROT MUKADI			0.00	150.00		0.00
RAOUL BUSHIRI			0.00	150.00	75,500.00	11.58
RICHARD MBENGA			0.00	150.00	48,000.00	7.36
RICHARD MUTEBA	325.41	332.259	6.85	150.00		0.00
ROGER KABAMBA			0.00	150.00	177,000.00	27.14
ROGER MILAMBO			0.00	150.00	132,000.00	20.24
SAMY TSHIBANGU			0.00	150.00	37,000.00	5.67
SYLVAIN MUKENDI			0.00	150.00	174,600.00	26.77
SYLVIE KANJINGA			0.00	150.00	48,500.00	7.44
THARCISSE			0.00	150.00		0.00

KALONJI						
JEAN KANKOLONGO			0.00	150.00		0.00
ADEPK	15414.95	17162.38	1747.43	150.00	2,286,600.00	350.61
TONNY MAFUTA			0.00	150.00		0.00
TSHIMANGA MULANGALA			0.00	150.00		0.00
VALENTIN KABONGO			0.00	150.00	39,500.00	6.06
MAMIE NGOMBA	829.4758	833.8547	4.38	150.00	21,500.00	3.30
XAVIER BANZA	234.2725	269.2806	35.01	150.00	385,300.00	59.08
ZOE ACTION CONTRE LA FAIM			0.00	150.00	700,000.00	107.33
ZOE KALALA RESIDENCE			0.00	150.00	150,000.00	23.00
BULANDA NKESE	139.5427	148.4001	8.86	150.00	58,250.00	8.93
JEAN ROCY KABONGO			0.00	150.00	40,000.00	6.13
JOSE NTUMBA			0.00	150.00		0.00
COLIN ELUMBA NGOY			0.00	150.00		0.00
KASONGO BATU	119.3586	123.5909	4.23	150.00	30,000.00	4.60
MOISE KALALA			0.00	150.00	40,500.00	6.21
MULOWAYI AUGU	162.7989	170.7807	7.98	150.00	23,550.00	3.61
FRANCOIS MALABA KANYIKI	310.6558	342.8022	32.15	150.00		0.00
DIEUDONNE KALUBA DIBUA	104.8418	112.41	7.57	150.00		0.00
BENOIT MBUYI	643.4701	680.8224	37.35	150.00	246,650.00	37.82
MARCELLIN BILOMBA	323.6115	324.5698	0.96	150.00	32,750.00	5.02
ARTHUR NTUMBA KAVUMBU	0.12	7.1822	7.06	150.00		0.00
ELISEE BABALE KALENDA			0.00	150.00	23,500.00	3.60
BONI TSHIAMALA			0.00	150.00	44,500.00	6.82
ALFRED MUANANDIBU 1			0.00	150.00		0.00
MITEWU KAZEMBE	762.9151	802.8771	39.96	150.00	302,700.00	46.41

ASUMANI/RVA			0.00	150.00	30,000.00	4.60
JEAN MUKENDI			0.00	150.00	191,000.00	29.29
EFOLOKO ELOMBE	58.0897	73.1914	15.10	150.00	134,300.00	20.59
AVON MAYOMBO	165.5246	172.046 9	6.52	150.00		0.00
DAVID TSHIBUABUA	98.7273	109.963 2	11.24	150.00		0.00
HENRI KATUMANGA	1617.051	1687.80 5	70.75	150.00	375,100.00	57.52
ALEXIS LUTSHIAKA	32.5056	36.8167	4.31	150.00	20,200.00	3.10
DIDIER KABEYA WA BANZA	198.9249	198.925 4	0.00	150.00		0.00
TEMOINS DE JEHOVAH	191.7807	201.116 6	9.34	150.00	130,350.00	19.99
PIERRE CELESTIN MUKENDI	124.125	132.927 9	8.80	150.00		0.00
ALPHO MUSAWU			0.00	150.00		0.00
META MUAMBA	2022.989 8	2292.70 1	269.71	150.00	387,850.00	59.47
MAO MBUYI	393.2815	407.827 8	14.55	150.00		0.00
WILLIAM KASONGO	90.9429	90.9429	0.00	150.00		0.00
MARIE PAULE LEMBA	49.1235	50.8357	1.71	150.00		0.00
JOLIE MIANDA KABULU	106.2126	117.997 9	11.79	150.00	87,000.00	13.34
ALFRED MUANANDIBU 2	143.4351	167.231 6	23.80	150.00	111,000.00	17.02
JP KAYEMBA NTUMBA	193.3228	197.272 9	3.95	150.00		0.00
KANDE KANDE CHRISTIAN			0.00	150.00		0.00
BERTHE NGALULA 1	118.23	118.23	0.00	150.00		0.00
BERTHE NGALULA 2	95.957	95.957	0.00	150.00	32,200.00	4.94
IRENE KAMUANYA	59.9432	65.0873	5.14	150.00	49,700.00	7.62
DAVID CIPONGU	62.1962	78.983	16.79	150.00		0.00
JADOT KADIMA	1014.574 6	1101.49 5	86.92	150.00	594,200.00	91.11
Béa NGOMBA	931.5331	989.640 2	58.11	150.00	452,500.00	69.38
STEPHANE MBENGA	458.8137	469.254 1	10.44	150.00	113,250.00	17.37
LAURENT TSHITE	550.0036	560.861 5	10.86	150.00		0.00

PONTIEN TSHIANYI			0.00	150.00	68,000.00	10.43
LOUIS D'OR NTUMBA	236.0937	263.744 9	27.65	150.00	40,500.00	6.21
PATRICK MUKADI			0.00	150.00	26,700.00	4.09
KABAMBA NYAMA	399.5321	413.046 9	13.51	150.00	52,950.00	8.12
SCOLA KANKOLONGO	353.275	362.798 2	9.52	150.00	186,450.00	28.59
BENJAMIN MBUYI			0.00	150.00		0.00
KABONGO CHRISTOPHE	1691.816 6	1982.83 4	291.02	150.00	381,750.00	58.54
HUBERT BEYA	303.051	312.752 7	9.70	150.00		0.00
PAROLAT BIBOYI	60.6059	70.6159	10.01	150.00	45,950.00	7.05
STANIS KANKOLONGO	620.453	644.604 6	24.15	150.00	88,850.00	13.62
CICM	153.1957	214.932	61.74	150.00	900,000.00	138.00
LAURENT TSHIBANGU MANDA	119.3848	160.98	41.60	150.00		0.00
MUTEBA MALABA	83.9372	93.768	9.83	150.00	78,000.00	11.96
CRISPIN KALUBI	229.1311	258.370 8	29.24	150.00	406,900.00	62.39
THERESE KABOLA NGOYI	27.4588	29.6932	2.23	150.00		0.00
PATRICK NTUMBA	31.4563	49.5633	18.11	150.00		0.00
MARIE BILONDA LUNZENZA	43.5959	51.6539	8.06	150.00	140,200.00	21.50
CLAUDE MBUYI	192.24	192.24	0.00	150.00		0.00
Jean Crispin MUKENDI	63.4132	80.6463	17.23	150.00	218,250.00	33.47
Christine NTUMBA	218.51	230.910 7	12.40	150.00	540,650.00	82.90
ALAIN MUIMBI	26.5844	34.611	8.03	150.00	108,500.00	16.64
Guylaine MUKAJIMUENYI	267.0104	431.128 6	164.12	150.00	994,650.00	152.51
SAMY MUNTU	23.7843	30.3453	6.56	150.00	35,200.00	5.40
Abonné BF 16			0.00	150.00	446,550.00	68.47
Abonné BF 27			0.00	150.00	395,100.00	60.58
M3 CTMETER P		877	877.00	150.00		0.00
			7854.93		34895450.00	5163.62

Annexe B : Etat des infrastructures

Trimestre Q2	Nbre robinets total	Nbre robinets fonctionnels	Compteur fonctionnel	Hygiène	Présence de fuites	Etat structure BF	Drainage
BF1	1	1	1	Propre	-	bon	Assez-bon
BF2	4	2	1	Propre	oui	bon	bon
BF3	4	4	1	Propre	-	Assez bon	mauvais
BF4	4	4	1	Propre	-	bon	bon
BF5	4	3	1	Propre	-	Assez bon	mauvais
BF6	4	2	1	Propre	oui	bon	Assez-bon
BF7	4	2	1	Propre	-	Assez bon	bon
BF8	4	4	1	Propre	oui	Assez bon	bon
BF9	4	2	1	Propre	-	bon	mauvais
BF10	4	4	1	Mal propre	oui	Assez bon	mauvais
BF11	4	4	1	propre	-	bon	bon
BF12	4	4	1	Propre	-	bon	bon
BF13	4	2	1	Propre	-	bon	bon
BF14	4	2	1	Mal propre	-	bon	mauvais
BF15	4	4	1	Propre	oui	Assez bon	bon
BF16	4	2	1	Propre	-	bon	bon
BF17	4	2	1	Propre	-	bon	bon
BF18					-	Inéxistante	
BF19	4	4	1	Propre	-	bon	bon
BF20	4	2	1	Propre	-	Assez bon	bon
BF21	4	2	1	Propre	oui	Assez bon	Assez-bon
BF22	4	4	1	Propre	-	Assez bon	Assez-bon
BF23	4	3	1	Mal propre	oui	mauvais	mauvais
BF24	4	4	1	Propre	-	bon	bon
BF25	4	3	1	Propre	-	bon	bon
BF26	4	2	1	Propre	-	Assez bon	bon
BF27	4	3	1	Propre	-	Assez bon	mauvais
BF28	2	2	1	Propre	-	bon	bon
BF29	3	2	1	Propre	-	bon	Assez-bon
BF30	4	3	1	Propre	-	bon	mauvais
BF31	2	2	1	Propre	-	Bon	bon
BF32	2	2	1	Propre	-	Bon	bon