

# MAYI ETU BUKOLA , BUETU BUA MUBIDI



**Belgique**

partenaire du développement

Enabel, l'Agence belge de développement et  
son Projet Eau en République Démocratique du Congo

Présentent : "**Notre Eau, Notre Santé**"

En partenariat avec le Ministère du Développement Rural et le Ministère de l'Énergie  
et des Ressources Hydrauliques

**UN SCÉNARIO DE**  
**LUCAS CORNET • FABIAN PROD'HOMME**  
**ETIENNE BISIMWA • ANTOINE MESU**  
**CLÉMENTINE LUKUNKU**

**DESSIN DE**  
**YANN KUMBOZI**

**TRADUCTION**  
**THIERRY NYOZIMA : SWAHILI**  
**GODEFROY MUKADI : TSHILUBA**

Imprimé en **aout 2019** à Kinshasa

République Démocratique du Congo

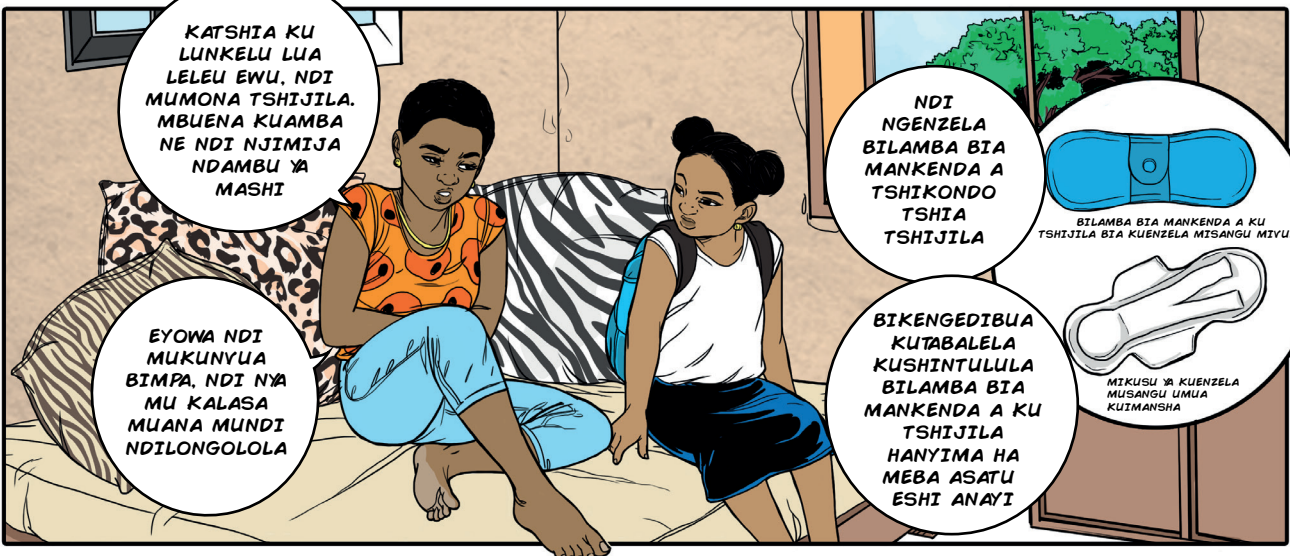


Tous Droits Réservés – Reproduction autorisée à condition de mentionner  
la source : **Enabel, Agence belge de développement**

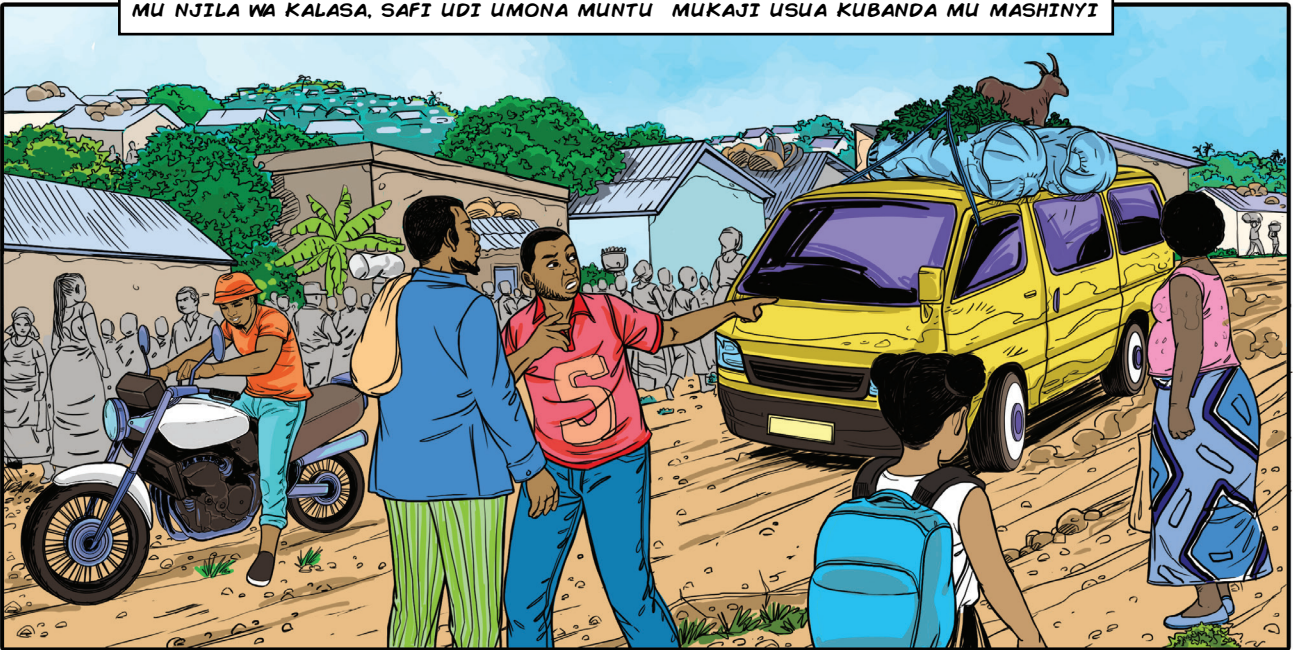


**Belgique**

partenaire du développement



MU NJILA WA KALASA, SAFI UDI UMONA MUNTU MUKAJI USUA KUBANDA MU MASHINYI



... KUDI MUHUYA MUBI MU NYUNGULULILU EWU ...



BANTU BONSO BADI BADIJKA BIANZA KU DIULU BUA MUHUYA AWU ?

KADI MUHUYA KAYI EWU ?



MBIMUENEKA ANU NE KI MOWA MAYI TO!

BUA KUIKALA NE BUKOLA BUA MUBIDI BUIENKA, BIKENGELA KOWA MAYI NI NSABANGA NANSHA MUSANGU UMUE KU DITUKU



BILAMBA BIETU MBIA KUSUKULA NE KUKOMA KUMPALA KUA KUBIYUALA



BIONSO EBI MBUA DIKALANGANA DIMPA DIA BANTU BONSO



MU DIZERA,SAFI UDI UNAYA NDUNDU NE MULUNDA WENDA WA HA MOYO AKILI NE BALONGI BABU BAKULABU



AKILI NTUMINA NDUNDU NGOBESHA

KUMULEKEDI UTUTA MU KAZUBU KETU AKILI WETU

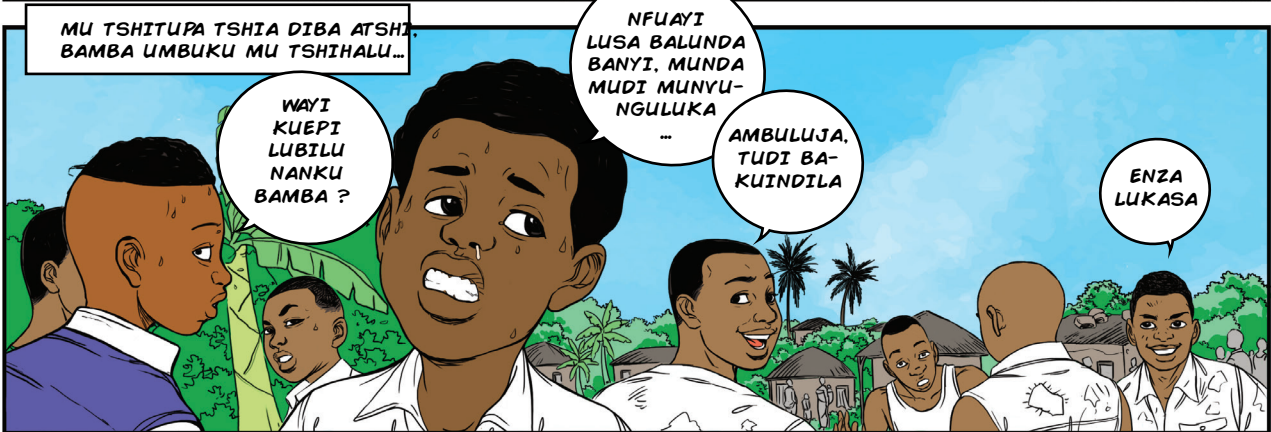
MU TSHITUPA TSHIA DIBA ATSHI BAMBA UMBUKU MU TSHIHALU...

WAYI KUEPI LUBILU NANKU BAMBA ?

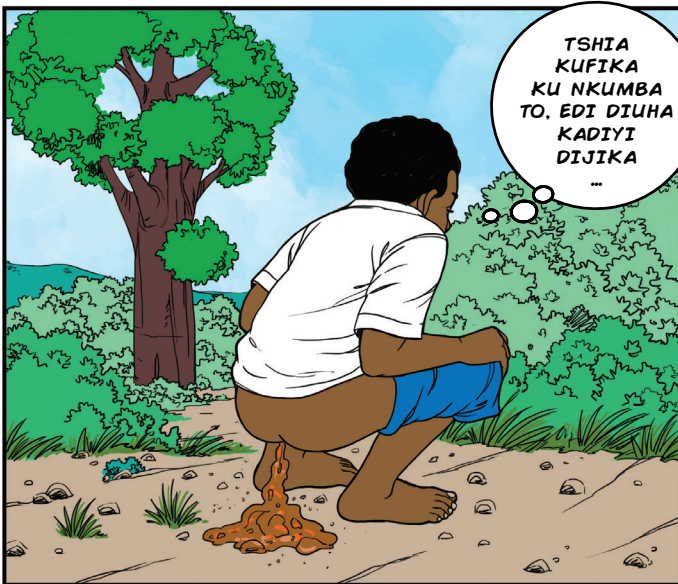
NFUAYI LUSA BALUNDA BANYI, MUNDA MUDI MUNYU-NGULUKA ...

AMBULUJA, TUDI BAKUINDILA

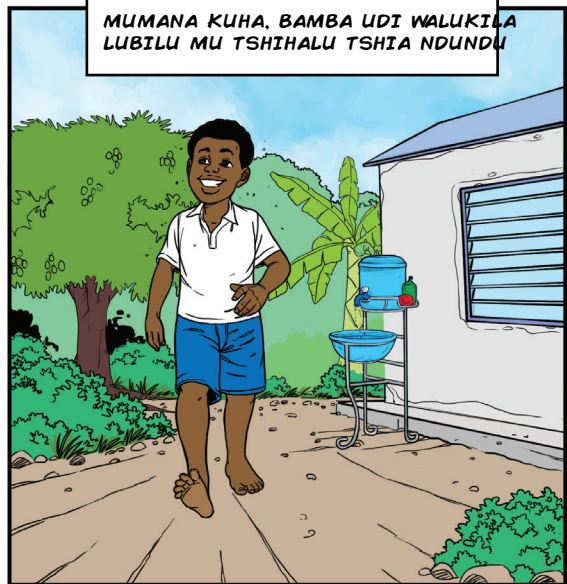
ENZA LUKASA



TSHIA KUFIKA KU NKUMBA TO, EDI DIUHA KADIYI DIJIKI ...



MUMANA KUHA, BAMBA UDI WALUKI LA LUBILU MU TSHIHALU TSHIA NDUNDU





TUBANGU-LUILAYI KUNAYA NDUNDU

TOO, KUENA MUKEZUKA TO



!?

IMANA BAMBA, KATUENA BUA KUNAYA NEBA TO



TUYUA BAKUMONA MUYA KUHA MU TSHISUKU, NE HASHISHA KUENA NANSHA KUENA BIANZA BIEBA TO.

WEWA KUYI MOWA BIANZA BIEBA, NEWUTUTAMPA-KAJILA MUNDA MUA DIUHA MUWUDI NAMU .

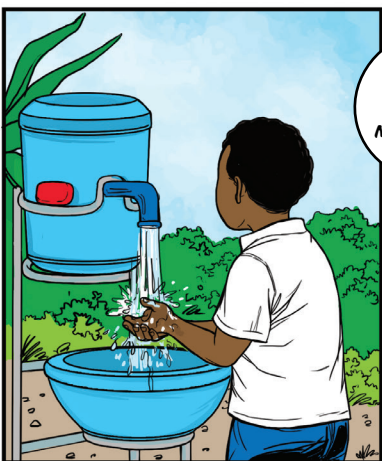
BUSHUWA ANYI ?



BAMBA BIKENGELA KOWA MAYI NI NSABANGA ...

... NE KUBUELA MU NKUMBA KI MU TSHISUKU TO..

PIKALABI NE KAKUENA NKUMBA BULELELA, KUJIBIKILA BUNYAWU HANYIMA HA KUSESUKA

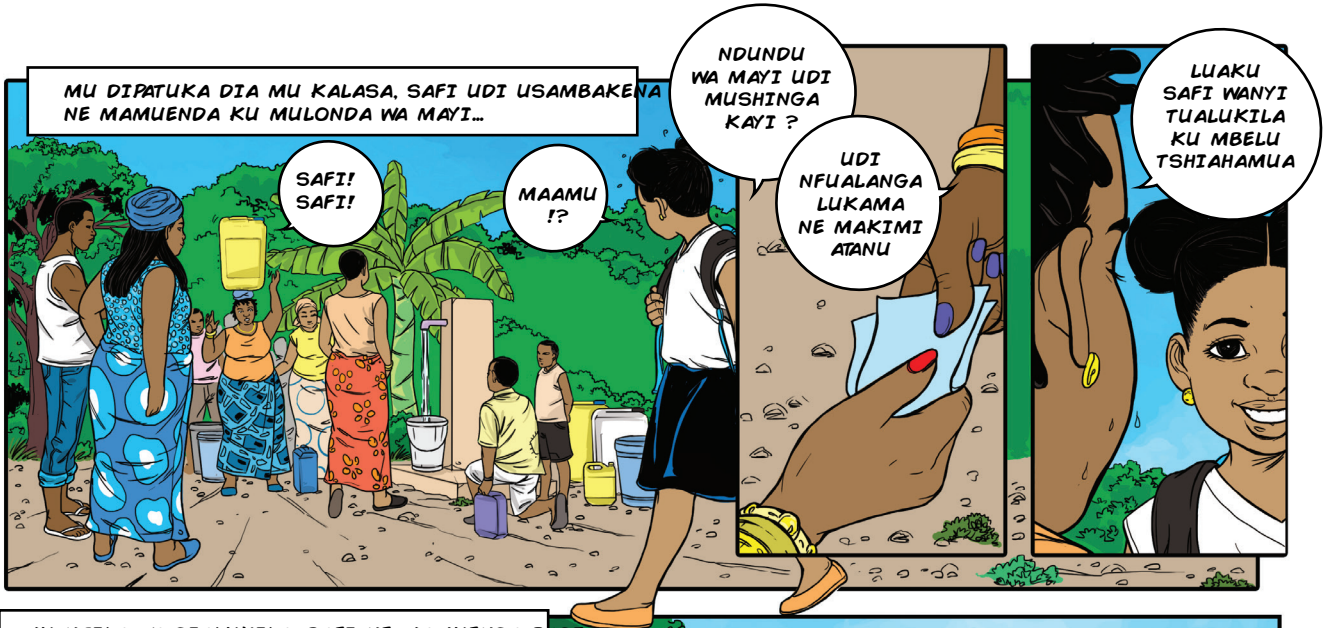


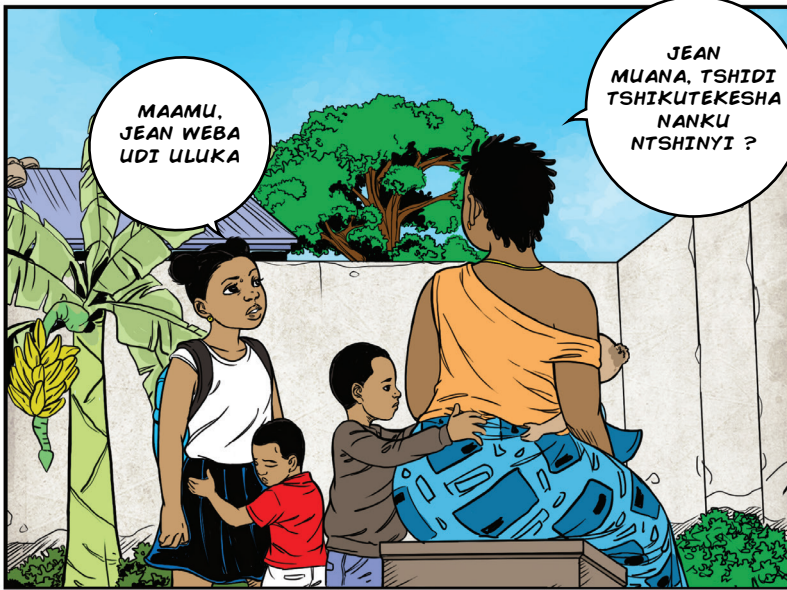
KI NGUEWA EWU MUKEZUKA

TUYAYI

TUBANGU-LUILAYI KUNAYA NDUNDU







MAAMU,  
JEAN WEBA  
UDI ULUKA

JEAN  
MUANA, TSHIDI  
TSHIKUTEKESHA  
NANKU  
NTSHINYI ?

BANA,  
NDI  
NDUNYUIJA  
NUNKU.  
...

...  
BUA  
KUEHUKA  
MASAAMA  
...



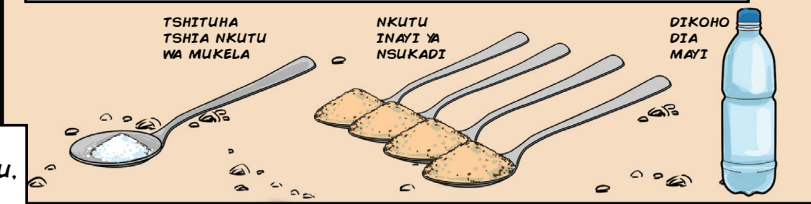
MBIBIBUBUA BUA KOWA BIANZA NE  
NSABANGA KUMPALA KUA KUDIA  
NE HANYIMA HA KUFUMA KU NKUMBA

KUSUKULA BILLISHI NE BUNYAWU NE  
KUBIMANSHA MU NKUMBA UDI NE  
TSHIAKUIKALA MUKEZUKA

MAYI A KUNUA, MBIMPA  
IKALA MALAMA BIMPA  
MU NZUBU.



JEAN WANYI, NUAKU DIKOHU DIA MAYI MASAMBASA NE NKUTU  
INAYI YA NSUKADI NE TSHITUHA TSHIA NKUTU WA MUKELA



TSHITUHA  
TSHIA NKUTU  
WA MUKELA

NKUTU  
INAYI YA  
NSUKADI

DIKOHU  
DIA  
MAYI

HADI BANTU BONSO BANEMEKA MIKENJI  
YA MANKENDA A MUBIDI NE A NYUNGULULU,  
DIKU DIJIMA DIDI DISHALA NE BUKOLA  
BUA MUBIDI



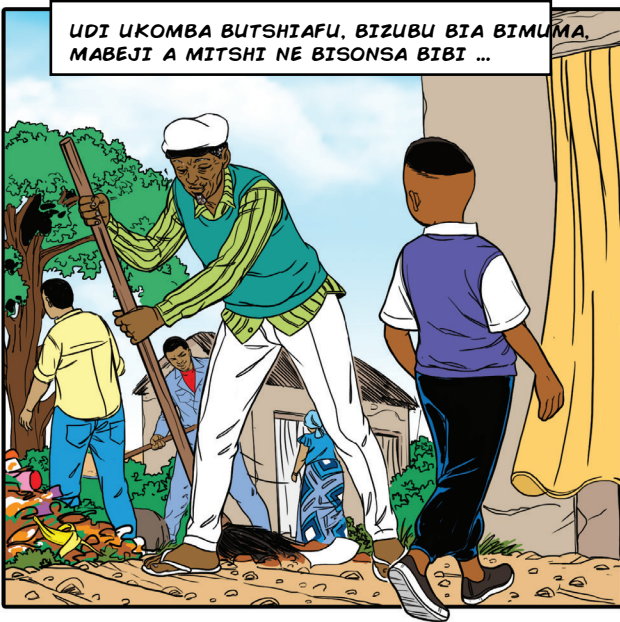


DIABOBUA KUA BA AKILI, KAKUENDA MATATA NE ALONGOLOLA MU LUHA



AKILI,  
NTUADILA  
LUKOMBO

UDI UKOMBA BUTSHIAFU, BIZUBU BIA BIMUMA,  
MABEJI A MITSHI NE BISONSA BIBI ...



... BUA KUELA MU NJILA ...



KAAA  
KAKU  
MATATA

KUENA  
MUMANYA  
NE BUTSHIAFU  
NE MABEJI A  
MITSHI AWU  
MBUANGA BUA  
BUFUKA BUA  
MFUKILU  
ANYI ?



!?

NTSHIENA  
MUSUA  
KUBIMONA  
KUISU  
KUANYI  
TO.



BUTSHIAFU BUDI BUBOLA BU MUDI : MABEJI A MITSHI BISONSA BIBI, BIZUBU BIA BIAKUDIA, TUDI BUA KUBUINGUIJA MU TSHINA NE KUBIANDAMUNA BUANGA BUA BUFIKA BUA MFUKILU. KI MBIKOLA BUA KUBIENZA NE KA BIENA BILOMBA MAKUTA TO. BILOMBA ANU KUBIJIKA MU TSHINA MU DITUMBA DIA LUHANGU.



HANYIMA HA NGONDU MIBALE, KUBIBUNDULULA NE NDAMBU YA LUSENGA, BUANGA EBU BUDI BUAMBULLUISHA BUA DIKOLA DIMPA DIA BIKUNYIBUA BIETU...



KADI BUTSHIAFU BUA TUBUDIMBU, MAKOHU NE BIAMUA BIDI BIKEBA TUISHI BU MUDI TUMUA NE NKOSA BIDI BISAMBULUJILA BANTU MAS AAMA



HICALAKU KAKUYI MUSHINDU WA KUBIENGULULA BUA KUENZA NABI MUDIMU MUKUABU, MBIMPA KUBIOSHA NE KUBIJIKA MU TSHIABI TSHINA.



TUMONANGANA HASHISHA ...

BUA DINAA DIHIADITHIA



NDEKELU WA TSHIHUNGU TSHIA KUMPALA



# MAYI ETU BUKOLA BUETU BUA MUBIDI



**Belgique**

partenaire du développement